

THE RECLAIM

Volume 2, Issue 1

January 2009—Quarter 1

REBIRTH COMMUNITY DEVELOPMENT CORPORATION
Ronald Bayles—Executive Director

Rebirth Receives a Grant for the GED/Adult Ed Program

QUARTER ONE

Joshua 1:9b —“Be strong and courageous. Do not be terrified; do not be discouraged, for the Lord your God will be with you wherever you go.” (NIV)

Rebirth would like to thank the Community Foundation of Greater Birmingham for both awarding us a grant and identifying additional funds to the sum of \$14,000. We are proud to be one of the many recipients of the efforts the Foundation makes in providing funds to assist in our communities.



Rebirth is a satellite site of Lawson State Community College in Birmingham, Alabama. Our specific client target groups are those deficient in basic skills or not having graduated from high school who are: (1) closest to being ready to enter the labor market; (2) incumbent workers; (3) drop-outs or those failing the Alabama High School Graduation Exam; or (4) those seeking to enter, and those having already entered the Alabama Army National Guard.

We are striving to: 1) put people to work; 2) help people obtain the GED; 3) help people enter postsecondary education/training; 4) improve literacy skills; and assist students within the age range who are currently enrolled in probation through the Juvenile Court. Our goal is to manage a structured program weekly with a fast-track GED Program to serve clients quickly and rotate them out. Rebirth will begin with assessing each individual in the Program. Reading will be the key subject that every student must achieve to go forward with the GED Program. We have partnered with Reading Horizons to assist us in our efforts.



NEW HOURS—EXTENDED FOR THE GED PROGRAM

Tuesday (10 am— 2 pm) (5:15 pm — 7pm)

Wednesday (3 pm — 6 pm)

Thursday (5:15 pm — 7 pm)

Friday (10 am — 2 pm) (5 pm — 7 pm)

The Mission of Rebirth

Rebirth Community Development Corporation’s mission is to build synergy among community and educational stakeholders to best utilize resources. Because we believe that it takes a community to raise and educate children, we will:

- Provide data and resource information to stakeholders that reveal best practice in assisting students throughout their educational experience.
- Develop and implement strategies to create the synergy among stakeholders needed to properly utilize the resources within the community.
- Work cooperatively with schools, school districts, faith-based organizations, parent groups, and advocacy groups that aspire to unite the community and resources for educational excellence.



Rebirth And United Way Food Bank

Rebirth is now a member of the United Way Community Food Bank. We can now expand our services more to the community.

Our first and primary reason for the food bank is to provide food to those who need it. Every day people living in our community go hungry because they don't have enough food to eat. Rebirth will assist to meet the basic food needs in

the community. We plan to be a vital link and partner with more food wholesalers, manufacturers, etc. so we will be able to be more of a service to the Titusville community.

We plan to serve low-income families, unemployed and underemployed, seniors, women and children living in domestic violence shelters, homeless, anyone without access to enough food, etc.

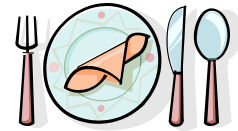
The Food Bank also solicits financial contributions which are used to buy warehouse equipment and supplies and to support specialized food programs and wholesale food purchases

For more information, contact Ronald Bayles at 205.422.1864.

“The participants share in fellowship and words of deliverance are offered during the delicious breakfast.”

Monthly Outreach Breakfast

Living Church Ministries and Rebirth sponsor a monthly outreach breakfast for the homeless and needy. This has been an ongoing event for more than thirteen years.



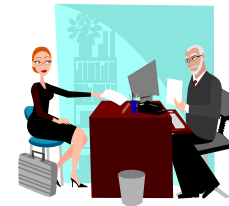
The participants share in fellowship and words of deliverance are offered during the delicious breakfast.

A van is also used to pick up the needy at local shelters. This ministry is a labor of love by the Church and Rebirth were we work together to feed an average of 125 at each breakfast. Volunteers assist in setting up tables, cooking, washing dishes, and cleaning.

The neighborhood looks forward to this event each month. The Outreach breakfast is every 4th Saturday of each month.

Alabama Employment Links

- <http://www.americasjobexchange.com/>
- <https://joblink.alabama.gov/ada/>
- <http://www.alabamajobs.com/>
- <http://www.employmentspot.com/jobs/Alabama/>
- <http://jobsinal.com/misc/page.aspx?pagenum=200>
- <http://alabama.jobs.topusajobs.com/> (Select the County)
- <http://www.personnel.state.al.us/default.aspx?AspxAutoDetectCookieSupport=1>



POST YOUR RESUME:

<http://www.dice.com/resumepost/>

Strategies For Creating Strong Readers

REFERENCE: U.S. Department of Education - Ages 0 to 13+



Through reading aloud, providing print materials, and promoting positive attitudes about reading and writing, you can have a powerful impact on your child's literacy and learning.

- Invite your child to read with you every day.
- When reading a book where the print is large, point word by word as you read. This will help your child learn that reading goes from left to right and understand that the word said is the word seen.
- Read your child's favorite book over and over.
- Read many stories with rhyming words and repeated lines. Invite your child to join in on these parts. Point, word by word, as your child reads along with you.
- Discuss new words. For example, "This big house is called a palace. Who do you think lives in a palace?"

Quarterly Workshops



**“SERVING
And
PRESERVING
Our
COMMUNITY”**

March—June—September—December

Quarter 1—March—Job Readiness - Each participant will learn the essentials of: Dressing for success, composing a resume and cover letter, assembling a portfolio, and preparing for interviews. A mock interview will be given to each participant.

Quarter 2—June—Community Clean Up Month - Community Clean up will involve every household in a two-mile radius of Omega Street South (Birmingham).

Quarter 3—September—Establishing and Maintaining Good Credit - Each participant will learn and understand credit and why we need it; why a good credit history is important; and how to establish and maintain good credit.

Quarter 4—December—Holiday Dinner and Toy Drive - Rebirth will adopt a family and supply toys to the community underserved households.

VISIT US ON THE WEB . . .

REBIRTH COMMUNITY DEVELOPMENT CORPORATION

Ronald Bayles, Executive Director
401 Omega Street, South
Birmingham, AL 35205

Phone: 205.422.1864
E-mail: rbayles@rebirthcdc.org



Donate With A Purpose!

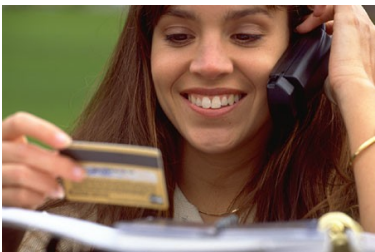
<http://www.rebirthcdc.org/support.html>

Each donor has the choice of donating directly to Rebirth through PayPal (A secured site) or shopping online with a portion of the proceeds going to Rebirth Community Development Corporation.

THANK YOU FOR YOUR SUPPORT!!

<http://www.rebirthcdc.org>

Rebirth—Support This Ministry



Rebirth Community Development Corporation now has a shopping ministry. You can shop from over 100,000 items in the Christian Bookstore at discount prices and 10% of your purchase will be donated directly to us!

You can shop from any of the 1000+ stores in the Online Mall

and we will receive a percentage of your purchase. We think this is a great way for you to help our ministry while you do your normal shopping. You don't need to purchase anything you normally wouldn't. You can even order your office supplies from Office Depot or Staples. Please take a few minutes to get familiar with the site (especially the Online Mall) and make this your first stop when you shop online.

If you are in business and would like to see your company featured on our site, you will be able to do so online.

You can help us purchase our items at a significant savings by listing your business on our site.



Thanks for your support and for

**“Making Your
Purchases
with
Purpose.”**